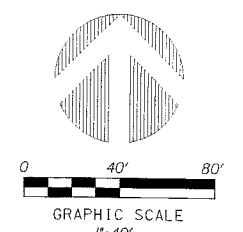


PERIMETER
 SURVEYING & MAPPING
 Certificate of Authorization No. LB7264
 Prepared by: Jeff S. Hodapp, P.S.M.
 949A Clint Moore Road
 Boca Raton, Florida 33487
 Tel: (561) 241-9988
 Fax: (561) 241-5182

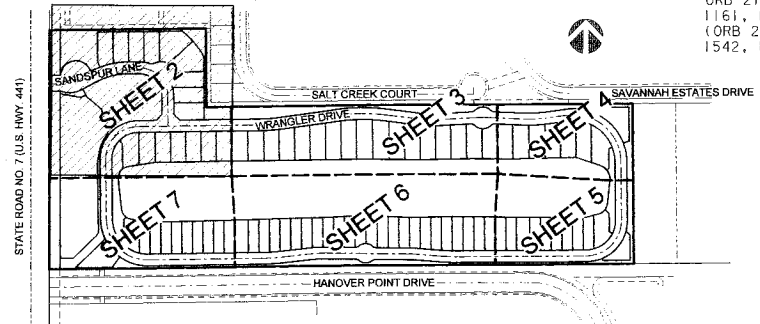
LADERA, P.U.D.

BEING THE SOUTH HALF OF TRACTS 71 AND 72, AND ALL OF TRACTS 73 THROUGH 79, AND ALL OF TRACT 80, LESS THE EAST 183 FEET, AND A PORTION OF THE NORTH 15 FEET OF A ROAD, DYKE AND DITCH RESERVATION, 30 FEET IN WIDTH, LYING SOUTH OF AND PARALLEL TO SAID TRACTS 73 THROUGH 80, BLOCK 43, ACCORDING TO THE PLAT OF "PALM BEACH FARMS COMPANY PLAT NO. 3", AS RECORDED IN PLAT BOOK 2, PAGES 45 THROUGH 54, PUBLIC RECORDS OF PALM BEACH COUNTY, FLORIDA, LYING IN SECTION 7, TOWNSHIP 45 SOUTH, RANGE 42 EAST, PALM BEACH COUNTY, FLORIDA.
JANUARY, 2012

STATE OF FLORIDA
 COUNTY OF PALM BEACH
 This Plat was filed for record at _____ M.,
 this _____ day of _____, 20____,
 and duly recorded in Plat Book _____
 on Page(s) _____
 Susan R. Cook, Clerk & Computer
 By _____ D.C.



NW CORNER
 SECTION 7-45-42
 (NOT FOUND)
 N 814399.321
 E 915825.443
 FOUND PALM BEACH COUNTY
 CONTROL MONUMENT
 P.B.F. 49
 N 814902.334
 E 915840.257



LEGEND:

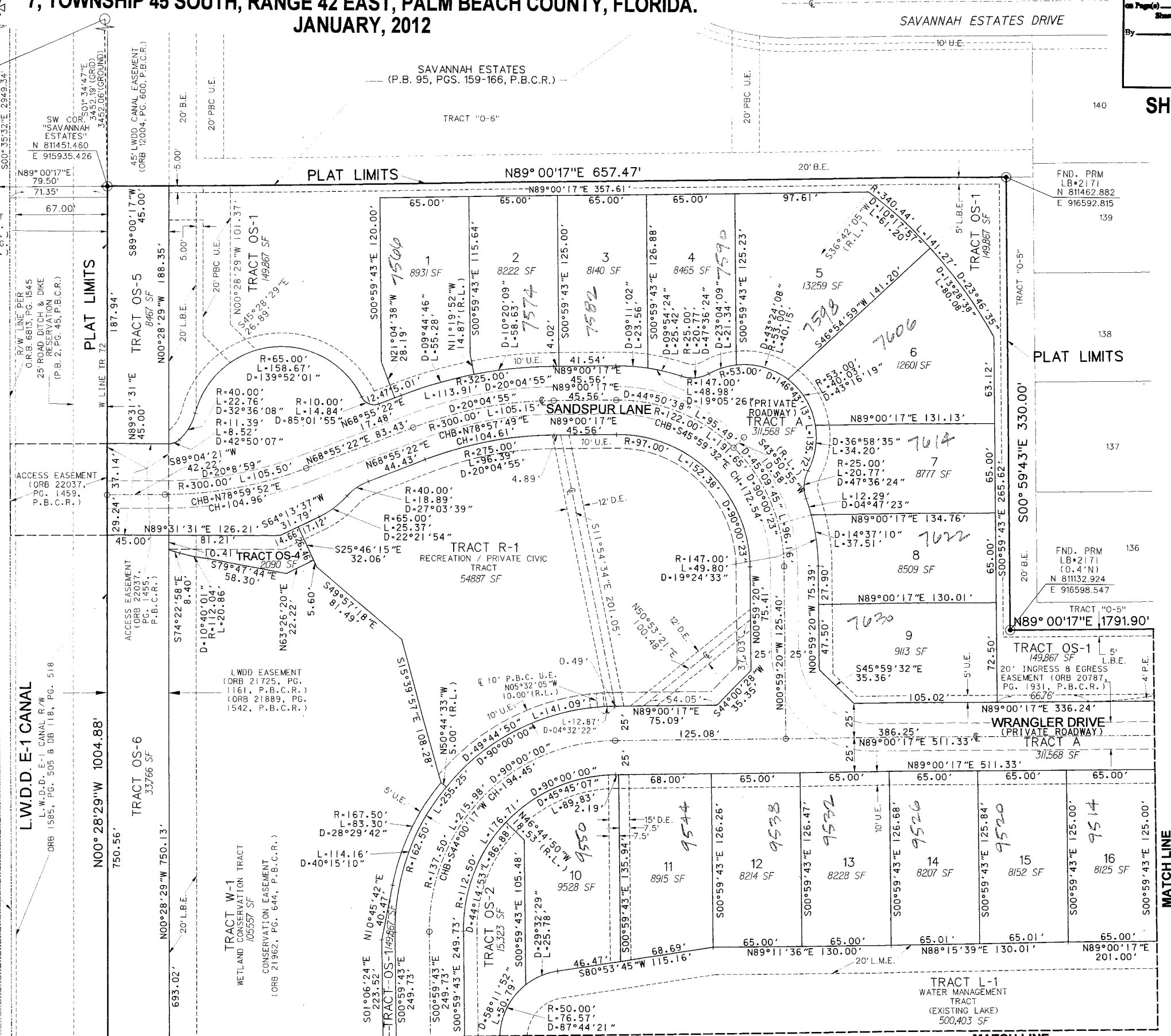
- SET P.R.M. (UNLESS OTHERWISE NOTED) - 4" DIAMETER ALUMINUM DISK IN CONC. MON. STAMPED PRM #LB7264
- P.C.P. STAMPED P.C.P. #LB7264 CENTERLINE

ABBREVIATIONS:

- AC. ACRES
- B.E. BUFFER EASEMENT
- CH. CHORD
- CHB. CHORD BEARING
- CONC. CONCRETE
- COR. CORNER
- D. DELTA (CENTRAL ANGLE)
- D.E. DRAINAGE EASEMENT
- I.R. IRON ROD
- I.R.C. IRON ROD AND CAP
- L.A.E. LIMITED ACCESS EASEMENT
- L.B. LICENSED BUSINESS
- L.B.E. LANDSCAPE BUFFER EASEMENT
- L.M.E. LAKE MAINTENANCE EASEMENT
- L.M.A.E. LAKE MAINTENANCE ACCESS EASEMENT
- L.S. LICENSED SURVEYOR
- L.S.E. LIFT STATION EASEMENT
- L.W.D.D. LAKE WORTH DRAINAGE DISTRICT
- MON. MONUMENT
- O.E. OVERHANG EASEMENT
- O.R.B. OFFICIAL RECORDS BOOK
- N.R. NON-RADIAL
- P.B. PLAT BOOK
- P.B.C.R. PALM BEACH COUNTY RECORDS
- P.E. PEDESTRIAN EASEMENT
- PG. PAGE
- P.C.P. PERMANENT CONTROL POINT
- P.O.B. POINT OF BEGINNING
- P.O.C. POINT OF COMMENCEMENT
- P.R.M. PERMANENT REFERENCE MONUMENT
- P.S.M. PROFESSIONAL SURVEYOR & MAPPER
- P.U.D. PLANNED UNIT DEVELOPMENT
- R. RADIUS
- R.L. RADIAL LINE
- R/W. RIGHT-OF-WAY
- SEC. SECTION
- S.F. SQUARE FEET
- U.E. UTILITY EASEMENT

STATE ROAD NO. 7 (U.S. HWY. 441)
 (FLORIDA DEPARTMENT OF TRANSPORTATION
 RIGHT-OF-WAY MAP SECTION 9321-2525)

L.W.D.D. E-1 CANAL
 L.W.D.D. E-1 CANAL R/W
 ORB 1585, PG. 505 & DB 118, PG. 518



MATCH LINE
SEE SHEET 3

MATCH LINE
SEE SHEET 7